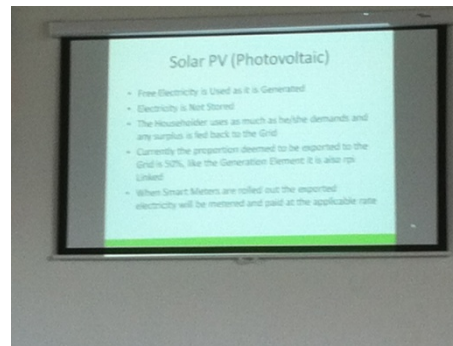
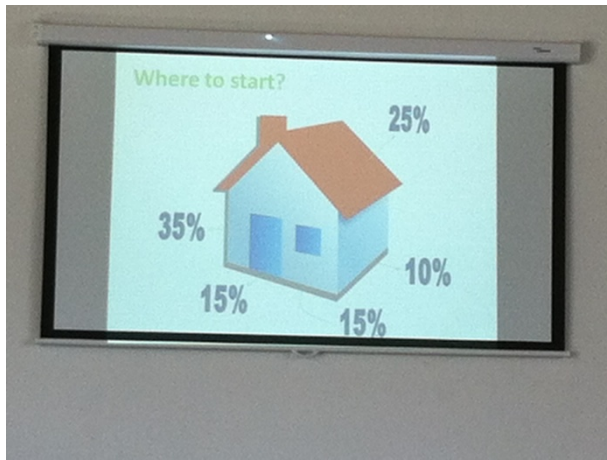
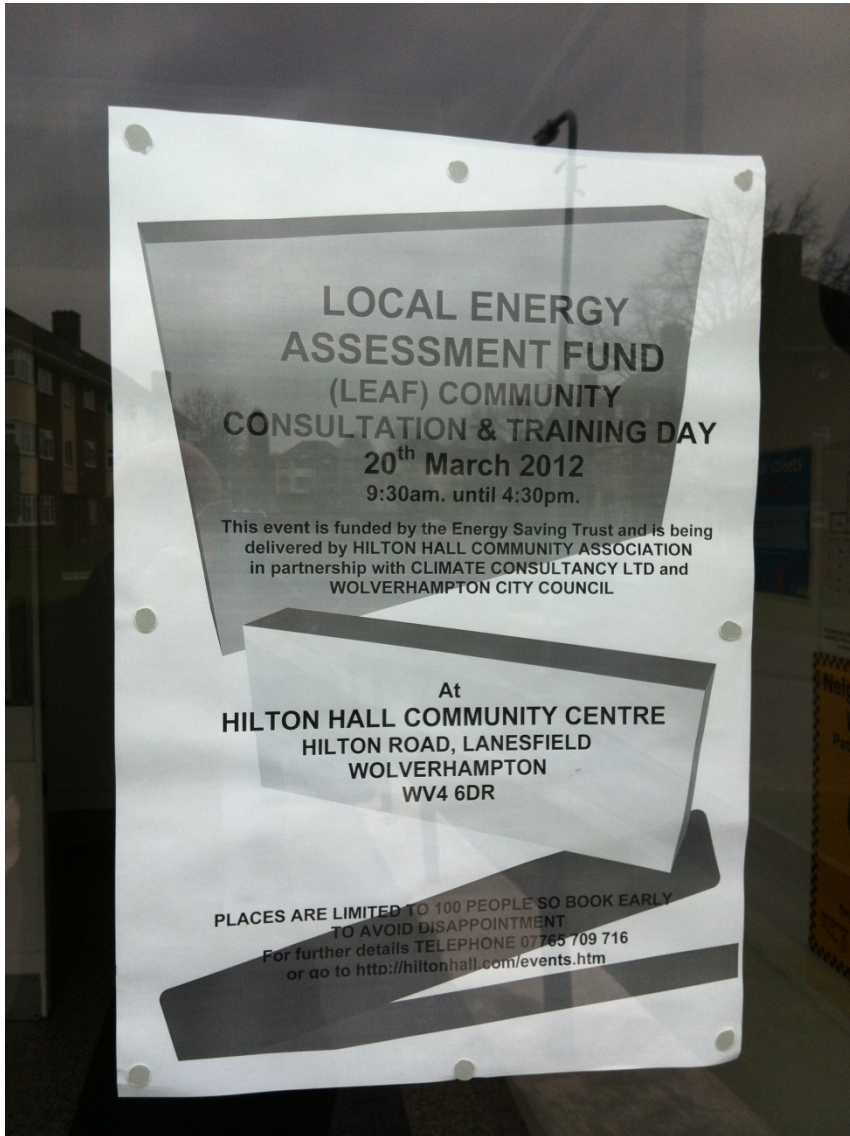


HILTON HALL COMMUNITY ASSOCIATION – LOCAL ENERGY ASSESSMENT FUND (LEAF) COMMUNITY CONSULTATION & TRAINING DAYS (FEBRUARY & MARCH 2012)







SEVEN COMMUNITY GROUPS BENEFITTED FROM THE ENERGY SAVING TRUST **LEAF** PROJECT (LED BY HHCA):
HILTON HALL COMMUNITY ASSOCIATION, CHURCH OF THE GOOD SHEPHERD, LEA ROAD CHURCH COMMUNITY CENTRE,
EASTFIELD COMMUNITY CENTRE, GUJARATI ASSOCIATION, ST. BARTHOLOMEW'S CHURCH HALL , & ST. MICHAEL'S PARISH CENTRE.



This Local Energy Assessment Fund (LEAF Programme) was funded by the Energy Saving Trust who sponsored Hilton Hall Community Association to lead this project.

HHCA linked-up with Tom Allard from Climate Consulting Ltd (of Croydon) and Wolverhampton City Council to deliver the project with maximum effect for the benefit of not just Hilton Hall, but also six other Community Groups. The Energy Efficiency Officer for Wolverhampton City Council (Tom Winckley) put us in touch with the other Community Groups to be audited.

Following Training provided by Climate Consulting Ltd and experience gained by the renovation and energy efficiency measures already employed at Hilton Hall Community Centre, the Management Team of HHCA then provided the premises and staffing to disseminate the audited information back to the wider Community via a series of LEAF Community Consultation & Training events.

We were helped along the way by several Guest Speakers and Specialists in Renewable Energies. Mark Littlejohn from SunSource Energy Ltd provided PowerPoint presentations on PV Solar & Thermal Panels, Heat Source Pumps and other energy efficiency and renewable energy measures. Pete Lamsdale from Lamsdale Glazing Ltd. presented the latest Triple Glazing system that is now available (with a 'Sample' Display Unit) showing the new 'K' Pilkington Energy Glass. Pete & Colleague shared their knowledge about the benefits of triple & double glazing over single glazed systems.

Tom Winckley, the Energy Efficiency Officer for Wolverhampton City Council explained about funding opportunities for local Residents re: energy efficiency & improvement grants, and gave out Energy Saving Booklets, his talk was aimed mainly at the Domestic Energy market. Tom Allard and Martin Trevor of Climate Consulting Ltd carried out Individual Audit Feedback Sessions (with Partner Group Members) after a Power Point Presentation by Tom Allard.

These events were part of a wider energy efficiency and educational fact-finding programme (led by Hilton Hall Staff & Climate Consulting Ltd) and were based around the Investigation and Auditing of the (above) seven Wolverhampton Community Groups. The end result being; individual 'Case Studies / Feasibility Studies' for 'Partner Community Groups' taking part, being presented to each group – specifically based around their premises and individual needs; re: sustainability & renewables project.

The intention from our point of view, right from the start, was to be able to share our knowledge & experience (gained over the last couple of years renovating & improving Hilton Hall) with local Residents & other Community Groups and to benefit from an external / independent audit of our present & future energy needs & usage.

The final 'Report' provided by Climate Consulting Ltd will form the main evidence and reference point for future energy efficiency improvement plans & measures. This information will help us (and other groups involved in the project) to reduce the Carbon Footprint of the building(s).

[Click Here to go back to hiltonhall.com](http://hiltonhall.com)